



ColorSave® 1000X

Gravimetric Feeder

New user-friendly features plus
the highest accuracy in the industry



AMPACET
Plastics Reimagined™

ColorSave 1000X improves operating efficiency as it takes dosing precision to a new level.

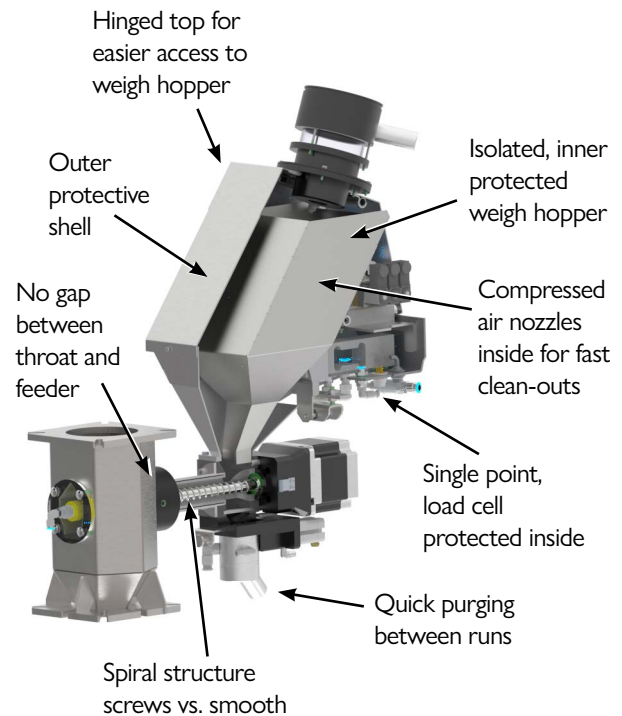
ColorSave 1000X offers all the benefits of our proven ColorSave 1000 model, including an outer protective shell with an inner floating weigh hopper; advanced algorithms for unmatched dosing precision; and Smart Clean automatic quick purging.

ColorSave 1000X adds more operator convenience with a new ergonomically designed PLC controller with an easy-to read 7" screen. For easier access to the weigh hopper, ColorSave 1000X offers a hinged top, and our SmartClean technology is enhanced with additional compressed air nozzles to quickly clean dust and fines from the weigh hopper.

ColorSave 1000X Advantages:

- Confidently feed expensive colors and additives at the lowest possible LDR
- Save labor and time between runs
- Optimum adjustment of operating points
- Reduce rejects and scrap
- Integrates with real-time in-line color correction technology

Savings on masterbatch use with ColorSave 1000X	Compared to
Up to 35%	Remote batch blending system
Up to 15%	Batch blender at machine throat
Up to 50%	Volumetric feeder



ColorSave 1000X Applications:

App. Version	Injection Molding	Extrusion	Extrusion Blow Molding
Operation Principle	Batch operation	Continuous operation	Continuous operation
Set Point	Setting of desired masterbatch percentage and shot weight	Setting of desired masterbatch flow rate at kg/hr (lbs/hr) or desired percentage from extruder throughput	Setting of desired masterbatch percentage and product weight
Input Signal	Dry contact input for synchronization with plasticization cycle (and optional with injection cycle)	Dry contact input for synchronization with extruder on/off operation and analog 10V or 24v digital-input 0 tachometer	Dry contact input for synchronization with extruder on/off operation and dry contact input from blowing machine for synchronization with blow cycle
Data Re-cording	Accumulated number of injection cycles and masterbatch weight	Accumulated data – total masterbatch consumed in kg (lbs)	Accumulated total masterbatch consumed in kg (lbs) and number of cycles

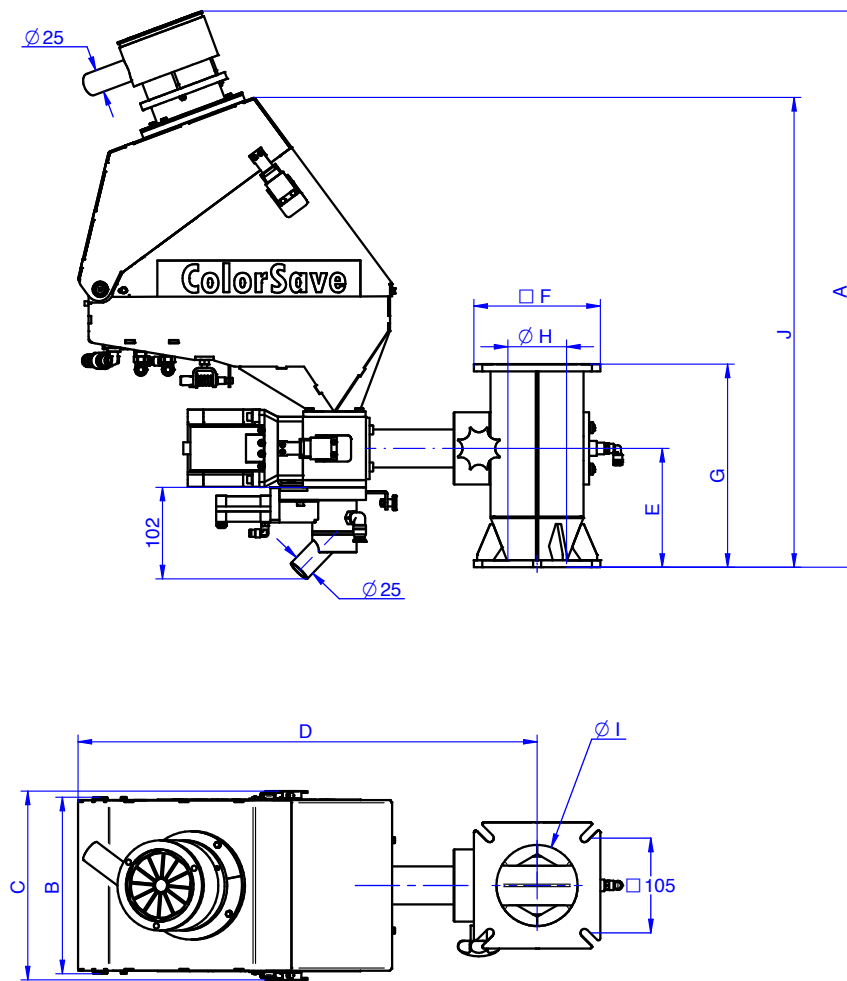
ColorSave 1000X Features:

- SmartClean feature automatically quick purges the feeder to improve safety and save time
- Additional compressed air nozzles in the weigh hopper removes fines and dust
- Stores up to 500 recipes, shortening setup time
- Easy replacement of feeding screw
- Hinged lid allows easier access to weigh hopper
- Optional integrated Venturi vacuum loader for masterbatch
- Easy to read 7-inch PLC control screen
- Real-time data collection and management of material consumption using control software

ColorSave 1000X Specifications:

Feature	Specification
Hopper	3/5/10/40 Liter
Output Range	3, 5, 10, 40 Liter – 0.3-240 kg/hr (.66-529 lbs/hr)
Motor	Powerful step motor
Display	7" Color touch screen
Recipes	500
Communication	Modbus TCP/IP
Load Cell	3 or 5 Liter – 15 kg (33 lb) 10 Liter – 30 kg (66 lb) 40 Liter – 85 kg (187 lb) Temperature compensated
Loader	Optional automatic integral Venturi vacuum loader
Mounting & Feeding	By neckpiece adapter, directly into the machine throat
Alarm Output	N/O or N/C dry contact, 24V/30mA max.
Weight	3 liter – 16 kg (35.3 lb) 5 liter – 18 kg (39.7 lb) 10 liter – 34 kg (75 lb) 40 liter – 85 kg (187 lb) Controller – 5 kg (11.0 lb)
Power	100-240V, 200W, 50/60 Hz

ColorSave 1000X Dimensions:



Dimensions mm (In.)	3 Liter Hopper	5 Liter Hopper	10 Liter Hopper
A	616 (24.3)	669 (26.3)	696 (27.4)
B	196 (7.7)	210 (8.3)	250 (9.8)
C	209 (8.2)	223 (8.8)	263 (10.4)
D	509 (20)	529 (20.8)	586 (23.1)
E	132 (5.2)	132 (5.2)	122 (4.8)
F	140 (5.5)	140 (5.5)	210 (8.3)
G	225 (8.9)	225 (8.9)	200 (7.9)
H	40-65 (1.6-2.6)	40-65 (1.6-2.6)	70-128 (2.8-5.0)
I	90 (3.5)	90 (3.5)	90 (3.5)
J	521 (20.5)	574 (22.6)	601 (23.7)

Neckpiece

ColorSave 1000X includes a standard neckpiece as per volume of hopper. Other types of neckpieces are available on request:



Hexagonal Neckpiece



Cooled Neckpiece



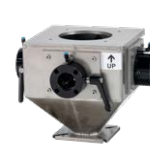
Triple Neckpiece



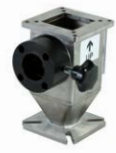
5" Neckpiece



2-inlet Neckpiece



4-inlet Neckpiece



Low-capacity Neckpiece



SmartClean quick color purge

An innovative and unique solution which is located at the base of the feeder, extracting the colorant without the need to have physical access to the feeder. It includes a piston that opens during the emptying process, and at the same time air pressure draws out the colorant. The feeder's screw turns backwards to release pellets of colorant from the screw area, while air nozzles in the screw channel and weigh hopper release compressed air to ensure removal of pellets and even fines for more efficient cleaning.



ColorSave 1000X can be integrated with Spectro Smart Technologies

- Measure and correct color in-line
- Correct color when ΔE deviations occur in real-time
- ColorSave 1000X adjust feeder speed based on Spectro input on $L^*a^*b^*$ values and specified tolerances

About LIAD Smart

Ampacet LIAD pioneered the single component gravimetric feeder for injection molding machines and is the leading developer of innovative feeders, blenders and real-time quality control color solutions for the plastics industry.



Look for the LIAD Smart label to ensure the highest quality accuracy.

For more information and to schedule a free demo,
email office@liadsmart.com or LIADSmart@ampacet.com

The information and recommendations contained in this document are based upon data collected by Ampacet and believed to be correct. However, no warranty of fitness for use or any other guarantees or warranty of any kind, expressed or implied, is made to the information contained herein, and Ampacet assumes no responsibility for the results for the use of products and processes described herein. No liability whatsoever shall attach to Ampacet for any infringement of the rights owned or controlled by a third party in intellectual, industrial or other property by reason of the applications, processing or use of the aforementioned information or products by the buyer.

AMPACET
Plastics Reimagined™



+972-4-9028800
office@liadsmart.com
POB 10, Sky St. Misgav Industrial Park
2017400, Israel
www.LIADSmart.com

+1-914-631-6600
LIADSmart@ampacet.com
660 White Plains Road
Tarrytown, New York 10591, USA
www.Ampacet.com